



800

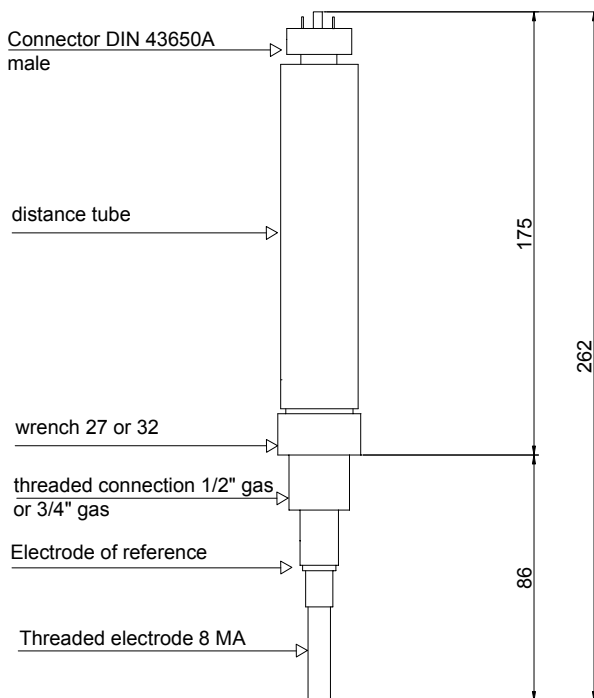
Safety probe Conforming to Directive 97/23/CE (PED) - certified B+D



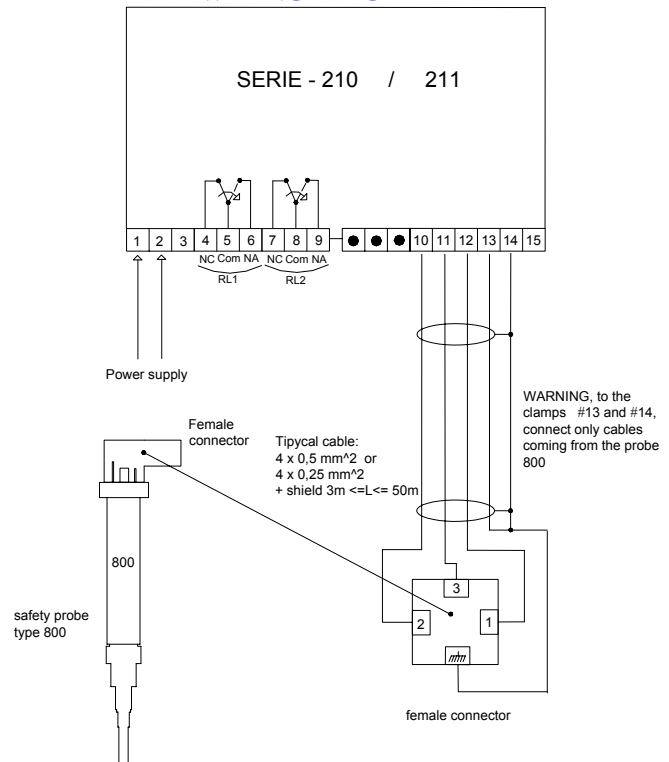
TECHNICAL CHARACTERISTICS

- **Sensor working:** conductive
- **Probe body:** stainless steel
- **Thread:** 1/2" gas and 3/4" gas
- **Electric wiring:** DIN 43650-A with cable gland PG11
- **Protection grade:** IP 65
- **Electrode:** INOX -8MA male
- **TS:** 239°C on the electrode
- **PS:** 32 bar on the electrode
- **Weight:** 400g
- **Material product controlled:** water

MECHANICAL DIMENSION



WIRING DIAGRAM



ORDER CODES

CODE	TEMPERATURE (TS)	PRESSURE (PS)	THREAD	ELECTRODE	NOTE
800-000-50	239 °C	32 bar	1/2" inox AISI 303	Inox AISI 303	
800-000-51	239 °C	32 bar	3/4" inox AISI 303	Inox AISI 303	

ACCESSORIES ORDER CODES

999-800-05		Electrode for safety probe L = 500mm	L = 500mm inox AISI 303	
999-800-10		Electrode for safety probe L = 1000mm	L = 1000mm inox AISI 303	