



211

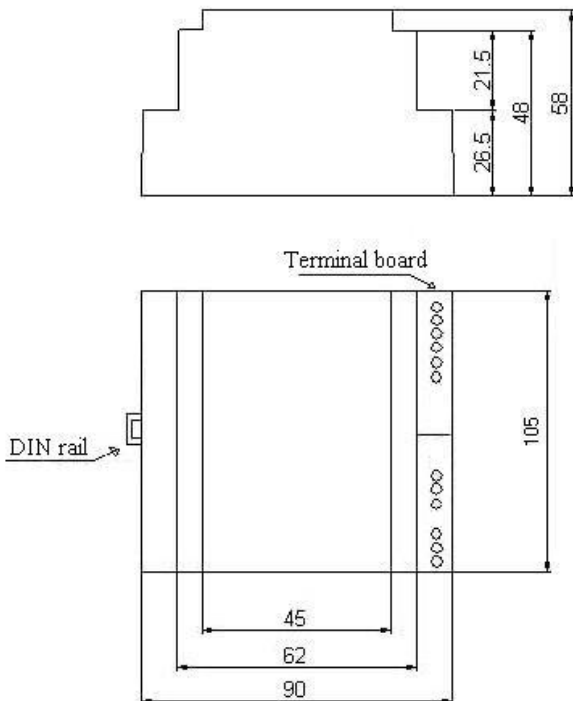
Electronic self testing conductivity level alarm and block for maximum level Conforming Directive 97/23/CE (PED) - certified B+D



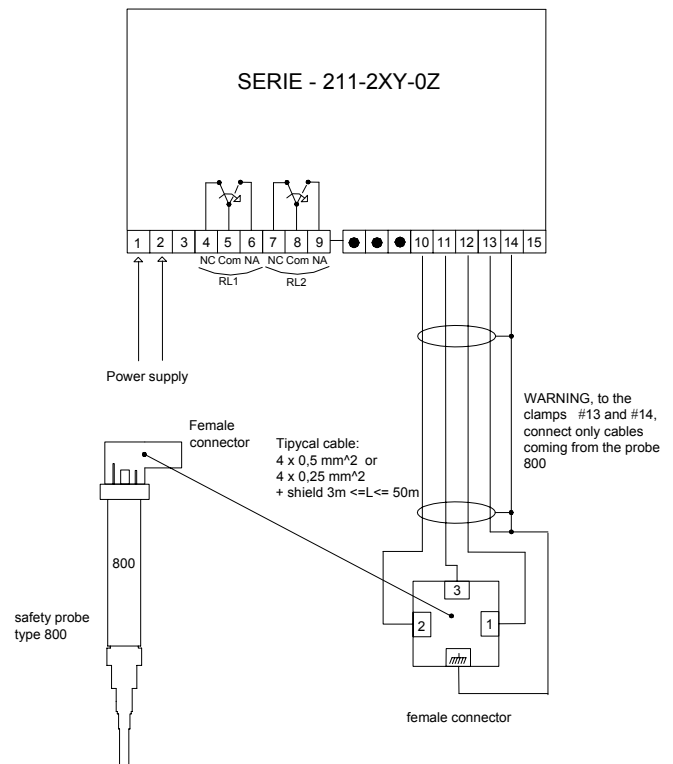
TECHNICAL CHARACTERISTICS

- electronic working, digital signal processor (dsp)
- double circuit of measure to conductivity, with compensation electrode
- 3 different self testing , 1 minute of periodicity
- output relay; two contacts in exchange 230 V-2.5A-AC1
- circuit of burner block at positive safety
- numerical display with coding of the alarms
- Minimum water conductivity: 0.5 μ S/cm
- Pushbutton / switch for manual test (optional)

MECHANICAL DIMENSION



WIRING DIAGRAM



ORDER CODES

CODE	CHARACTERISTICS	POWER SUPPLY		
211-200-0X	Conductivity > 100 μ S/cm	X =1 24V a.c. - X =3 230Va.c.		
211-210-0X	Conductivity > 100 μ S/cm with selector and test button	X =1 24V a.c. - X =3 230Va.c.		
211-201-0X	Conductivity 10 ÷ 500 μ S/cm	X =1 24V a.c. - X =3 230Va.c.		
211-211-0X	Conductivity 10 ÷ 500 μ S/cm with selector and test button	X =1 24V a.c. - X =3 230Va.c.		
211-202-0X	Conductivity 0.5 ÷ 20 μ S/cm	X =1 24V a.c. - X =3 230Va.c.		
211-212-0X	Conductivity 0.5 ÷ 20 μ S/cm with selector and test button	X =1 24V a.c. - X =3 230Va.c.		