



210

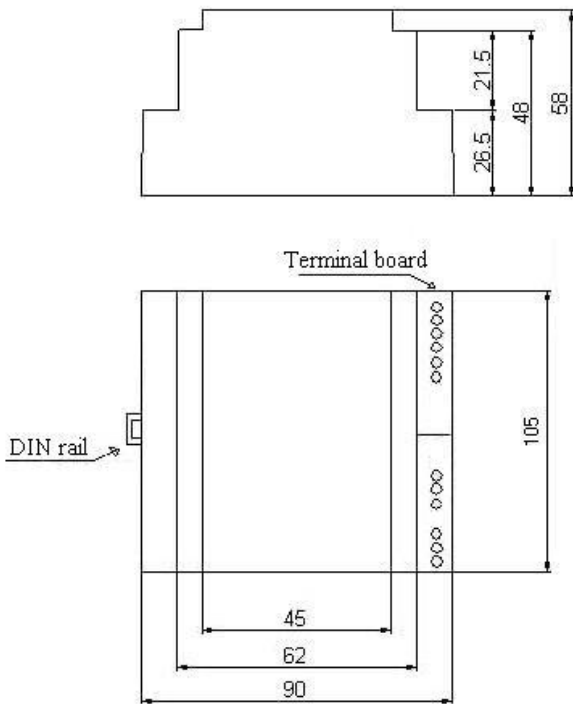
Electronic self testing conductivity level alarm and block for minimum level Conforming Directive 97/23/CE (PED) - certified B+D



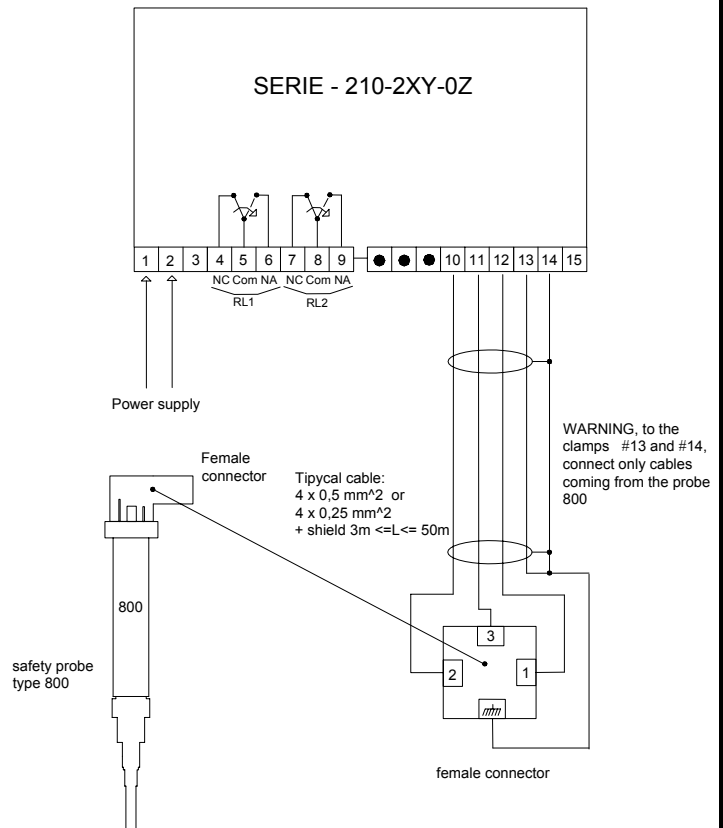
TECHNICAL CHARACTERISTICS

- electronic working, digital signal processor (dsp)
- double circuit with conductivity measurement, with compensation electrode
- 3 different self testing, 1 minute of periodicity
- output relay; two user contacts in exchange 230 V-2.5A-AC1
- circuit of burner block at positive safety
- numerical display with alarm coding
- Minimum water conductivity: 0.5 $\mu\text{S}/\text{cm}$
- Pushbutton/switch for manual test (optional)

MECHANICAL DIMENSION



WIRING DIAGRAM



ORDER CODES

CODE	CHARACTERISTICS	POWER SUPPLY		
210-200-0X	Conductivity > 100 $\mu\text{S}/\text{cm}$	X=1 24V a.c. - X=3 230Va.c.		
210-210-0X	Conductivity > 100 $\mu\text{S}/\text{cm}$ with selector and test button	X=1 24V a.c. - X=3 230Va.c.		
210-201-0X	Conductivity 10 ÷ 500 $\mu\text{S}/\text{cm}$	X=1 24V a.c. - X=3 230Va.c.		
210-211-0X	Conductivity 10 ÷ 500 $\mu\text{S}/\text{cm}$ with selector and test button	X=1 24V a.c. - X=3 230Va.c.		
210-202-0X	Conductivity 0.5 ÷ 20 $\mu\text{S}/\text{cm}$	X=1 24V a.c. - X=3 230Va.c.		
210-212-0X	Conductivity 0.5 ÷ 20 $\mu\text{S}/\text{cm}$ with selector and test button	X=1 24V a.c. - X=3 230Va.c.		